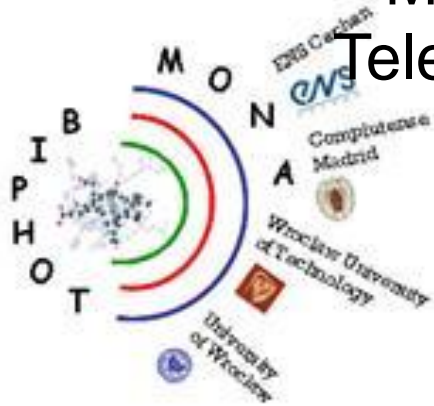


# Erasmus Mundus @Rice University

## MONABIPHOT

Molecular Nano- and Biophotonics for  
Telecommunications and Biotechnologies



**Surbhi Lal**

Executive Director, Laboratory for Nanophotonics,  
Research Scientist, ECE department  
Rice University, Houston TX.



# Laboratory for Nanophotonics



Prof. Naomi Halas  
Director, LANP



Surbhi Lal  
Executive Director, LANP



Link



Nordlander



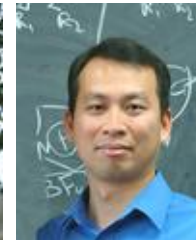
Landes



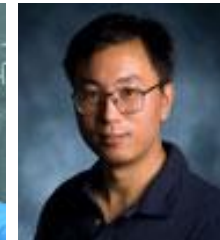
Hafner



Thomas



Zheng



Bao



Ringe

# LANP Expertise

We are a RESOURCE for

- research breakthroughs and advances in the broad, multidisciplinary field of Nanophotonics, spanning the physical, chemical, biological and information sciences, of near and long-term societal benefit,
- team-building and collaborative opportunities in the field of Nanophotonics here at Rice, regionally, nationally and internationally,
- graduate education and training programs in Nanophotonics,
- undergraduate research experiences that will provide advantages in subsequent graduate and professional opportunities.

HOME OVERVIEW FACULTY RESEARCH TRAINING OPPORTUNITIES EVENTS PUBLICATIONS JOIN US CONTACT

**LANP**  
LABORATORY FOR  
NANOPHOTONICS

**LANP**  
Laboratory for  
NanoPhotonics

to INVENT  
to UNDERSTAND  
to DEVELOP  
to SIMULATE  
to CONTROL  
to OPTIMIZE  
to APPLY

NANOSCALE OPTICAL  
ELEMENTS, COMPONENTS,  
AND SYSTEMS

Link recipient of the Inaugural Nanotechnology Award

Congratulations to [Stephan Link](#) who was awarded the inaugural Outstanding Young Scientist Award from the NANOSMAT conference, one of Europe's premier annual meetings in nanoscience, nanotechnology, and nanotechnology. [Read More](#)

Halas' Nanoshells on cover of the NNI Budget Supplement

**EVENTS**

Seminar - 'Solar highways: core-shell nanowires for high-efficiency solar conversion' by Prof. Erik Garnett,

Tuesday, May 6, 2014, 03:45 PM - 04:45 PM  
Duncan Hall 1070  
[More info](#)

+ explore events

<http://lanp.rice.edu/>

# Erasmus Mundus Partners

- Ecole normale supérieure de Cachan - Institut d'Alembert Cachan (Paris area), France (coordinator).
- Universidad Complutense, Madrid, Spain.
- University of Wrocław, Wrocław, Poland.
- Wrocław University of Technology (WUT), Wrocław, Poland.



# Porquerolles!



# How the Consortium Works

## **STUDENTS:**

- MONABIPHOT students email Prof. Halas with a CV, and the area of research they are interested in.
- Match to Faculty with similar interest
- Process paper work for Students

## **FACULTY:**

- Provide input to Prof. Isabelle Ledoux-Rak on student recruitment
- Work with Faculty at Rice when placing students

# Administrative Requirements

1. Recent CV
2. Dates? Length of stay?
3. Copy of your passport ID page
4. Copy of all previous US visas and immigration documents if applicable  
If bringing dependents, copies of their passport pages and proof of relationship
- 5. Proof of funding (minimum of \$2,000/month).**
6. DS-2019 form
7. DS-7002 form (Training/Internship Placement Plan)
8. Addendum A – Current college enrollment
9. Addendum B –
10. A letter from the Rice attesting the individual has adequate English skills.
11. A letter from the student's university stating that they are in good standing.

# MONABIPHOT Students @Rice



**Irenuesz Bulik**

Wroclaw University of Technology

Current: PhD @ Rice University

*Vibrational contributions to non-linear optical properties of molecules*



**Pawel Wozniak**

Wroclaw University of Technology

Current: PhD @ Max Planck Institute

*Built microscope for single particle dark field microspectroscopy*



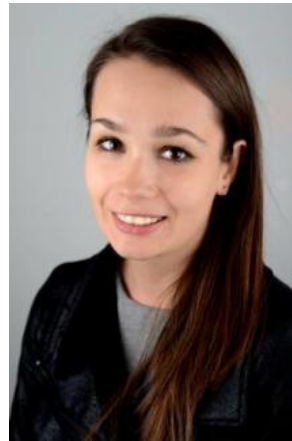
# MONABIPHOT Students @Rice



**Witold Mielczarek**  
Wroclaw University of  
Technology

Current: PhD @ Heriot-Watt  
Uni., Scotland.

*Optical resonances of gold  
nanodisk clusters  
and their potential for LSPR  
sensing.*



**Marta Gordel**  
Wroclaw University of  
Technology

Current: PhD @ WUT

*Synthesis of dual mode  
theranostic nanoparticles for  
biomedical imaging and  
photothermal therapy.*



**Radoslaw Kolkowski**  
Wroclaw University of  
Technology

Current: PhD @ WUT

*Plasmon Hybridization of  
Heterodimers.*

# MONABIPHOT Students @Rice



**Shu Tian**

Ecole normale supérieure de  
Cachan - Institut d'Alembert  
Cachan

Current: PhD @ Rice University

*Nanoshell-enabled Plasmonic  
Photothermal Bioethanol  
Production*



**Lixia Wei**

Ecole normale supérieure de Cachan  
- Institut d'Alembert  
Cachan

Current: Summer Research at Rice U

# Summary

- Erasmus Mundus (action 3) and now the Erasmus + MONABIPHOT program collaborations are ongoing
- Students – Bright, intelligent and enthusiastic
- The funding both for students and Rice has been less than optimal!

**Overall this has been a productive student exchange program,**

***But***

**This does not foster any collaborations with other research groups in Europe**